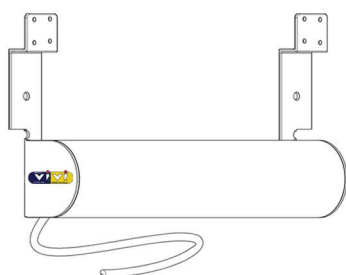
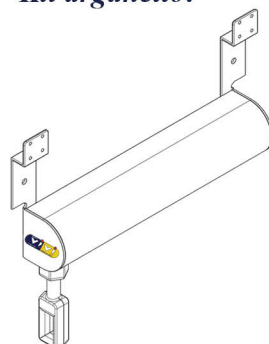


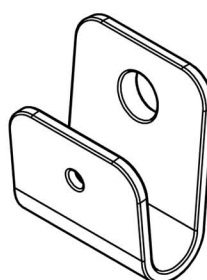
**Kit motore:**



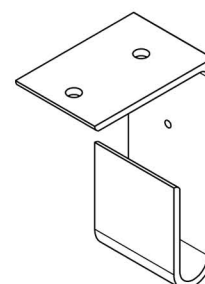
**Kit arganello:**



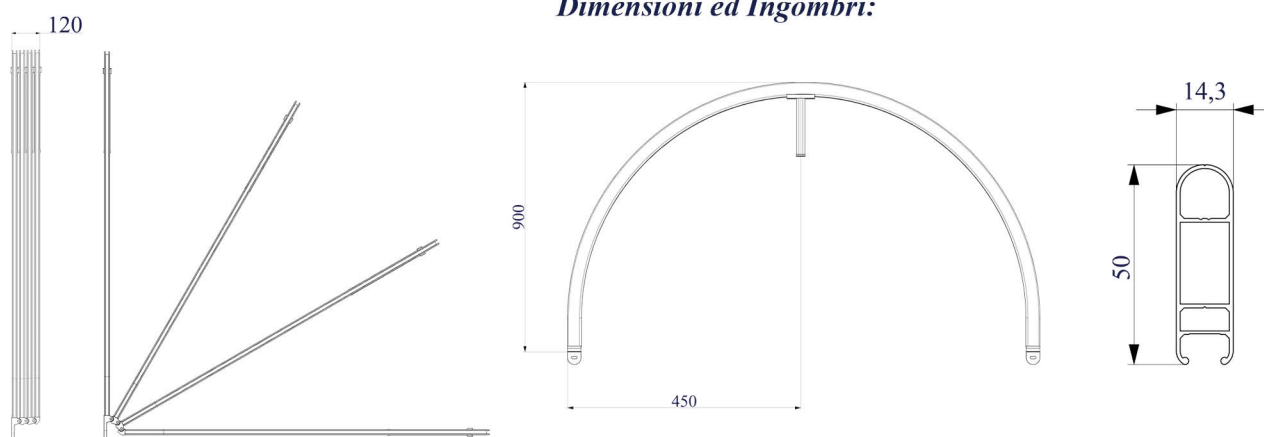
**Staffa parete:**



**Staffa soffitto:**



**Dimensioni ed Ingombri:**



**Descrizione Prodotto 4 Raggere Tonda:**

Tenda a cappottina con curve e cerniere in alluminio. Profilo in alluminio estruso da mm. 14,3 x 50,0.  
 Apertura e chiusura con fune.