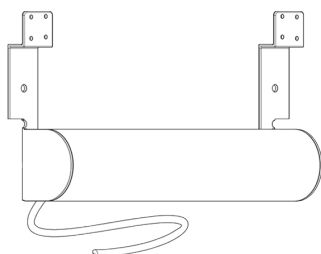
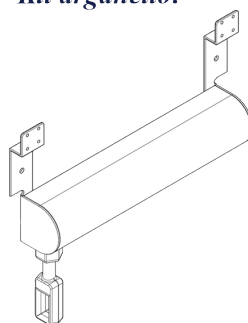


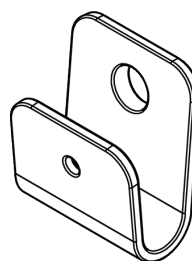
*Kit motore:*



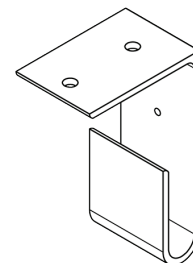
*Kit arganello:*



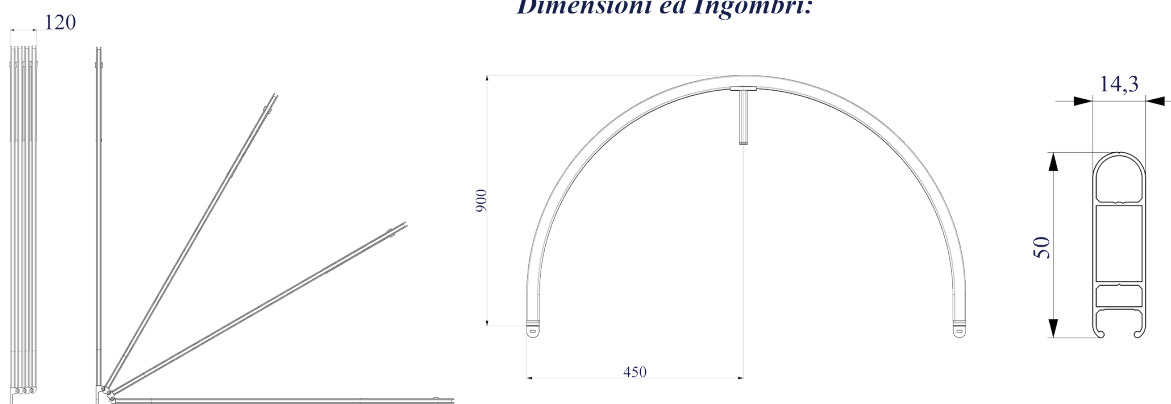
*Staffa parete:*



*Staffa soffitto:*



*Dimensioni ed Ingombri:*



Profili, curve e snodi completamente in alluminio.  
 Movimentazione standard con fune, il kit motore o arganello sono optional.

*Il prodotto viene costruito a Carate Brianza (MB) da ViVi-Italia*

[www.vivi-italia.it](http://www.vivi-italia.it)